



# VELOX CNC

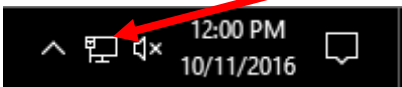
## Ethernet Adapter Settings

VELOX CNC  
1746 West Katella Ave. STE6  
Orange, CA 92897  
Office: (714) 639-3639  
Fax: (714) 639-3669

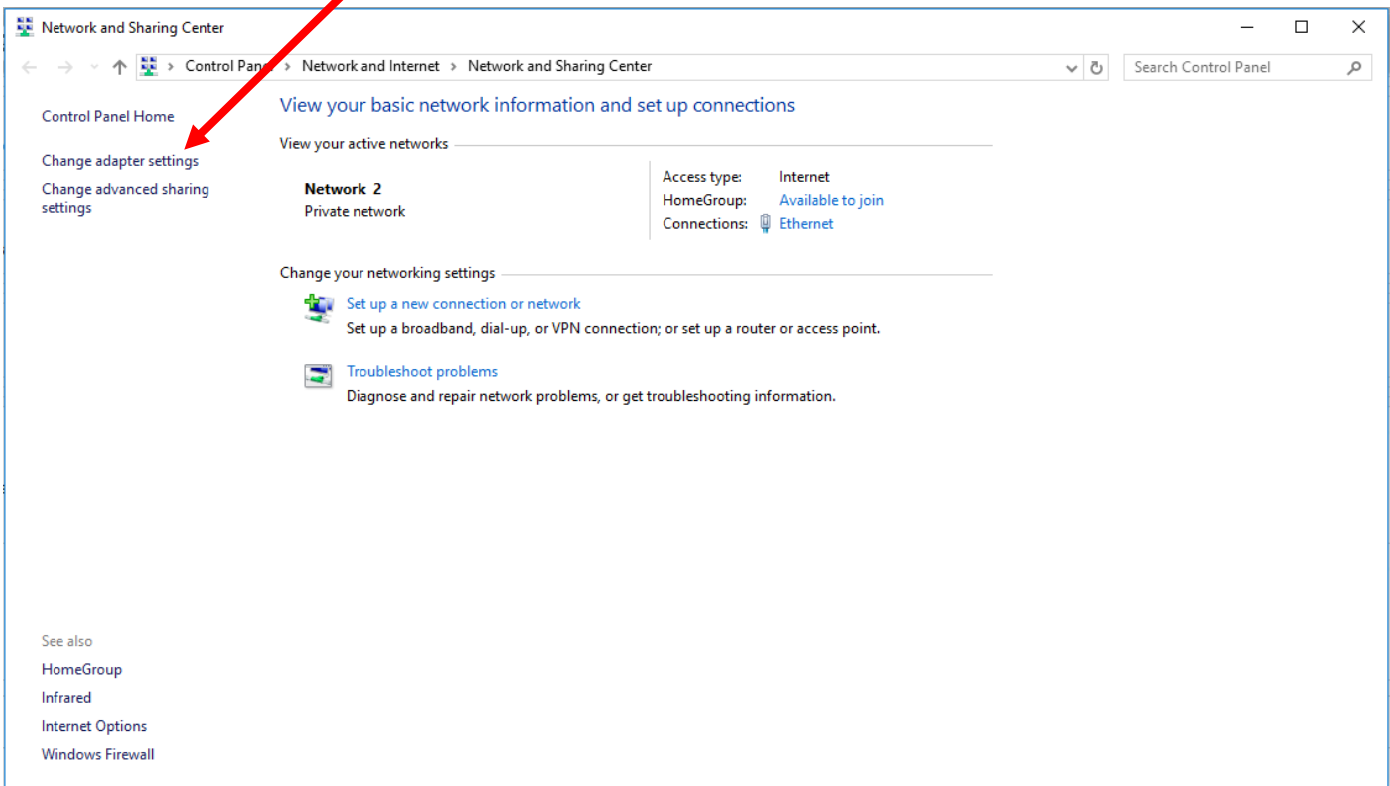
If the smooth step install does not install/work properly you may manually check your adapter settings by following the steps below. Please call a VELOX CNC rep. if your issue persists.

Look to the bottom right hand corner of your computer screen:

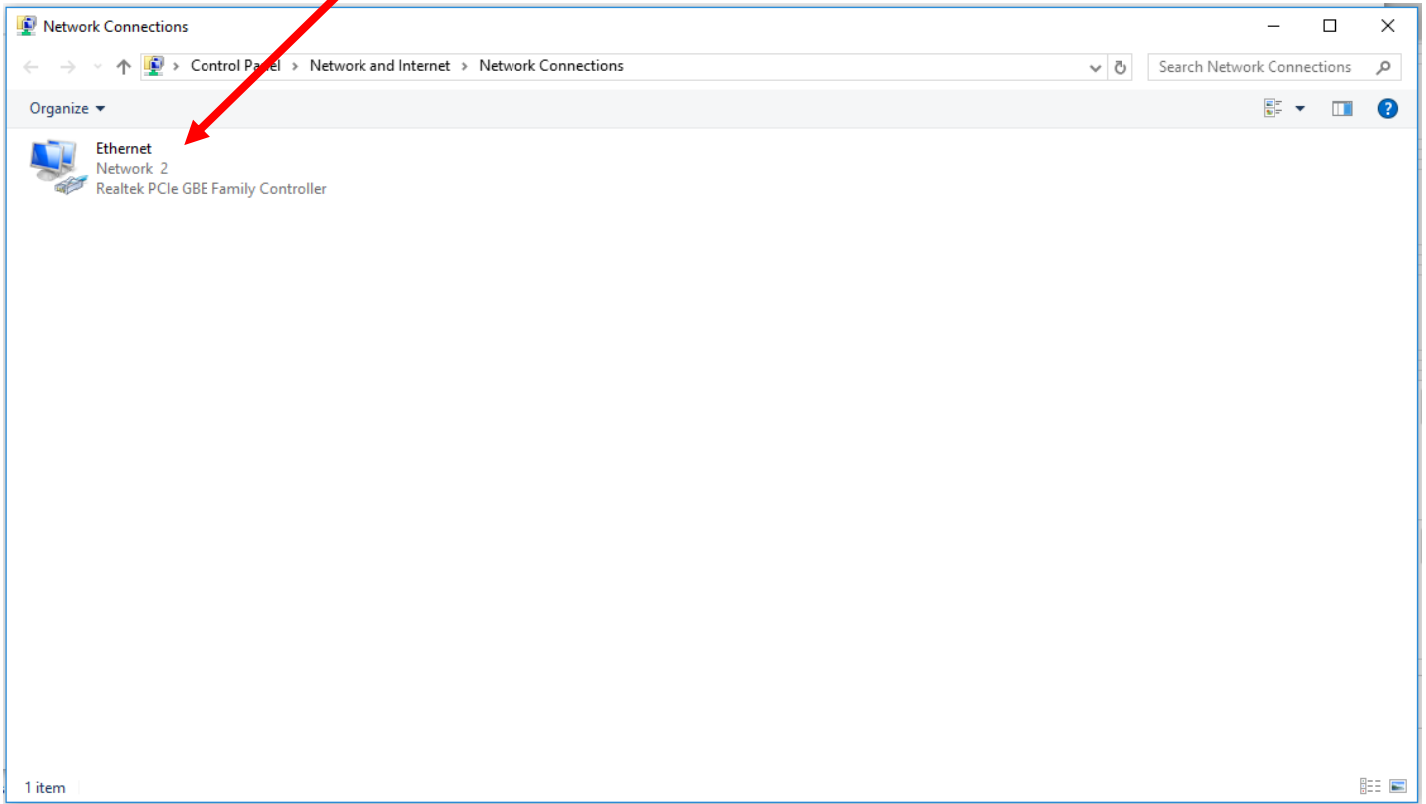
1.) Right click on the computer icon then left click on: **Open Network and Sharing Center**



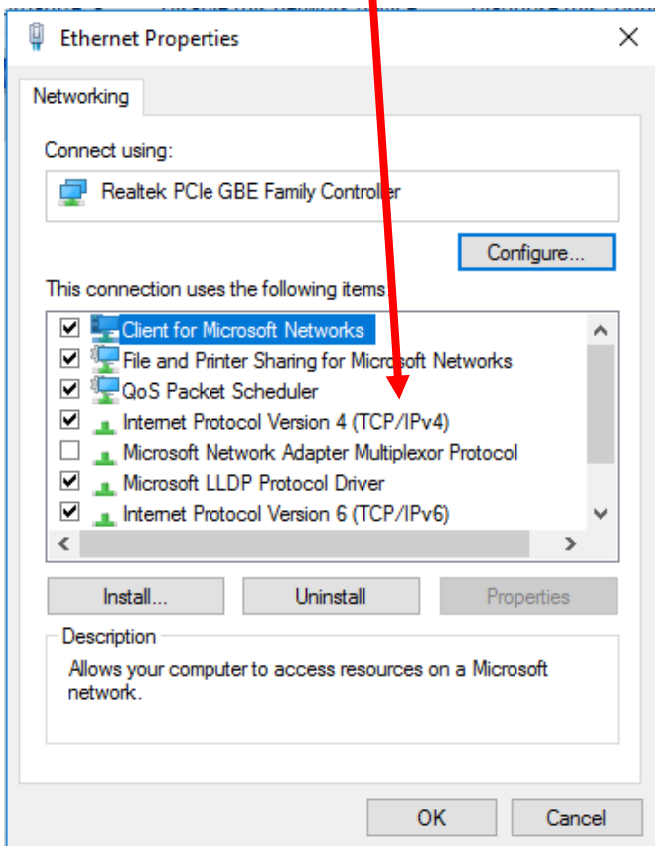
2.) Left click on: **Change Adapter Settings**



3.) Right click on the Ethernet adapter icon then left click on: **Properties**



4.) Double click on: **(TCP/IPv4)**



5.) Verify that these are your current settings:

